

I AM A POOR SHEPHERD UNDONE

PLAYFORD'S DANCING MASTER C.1667
AND IN THE BEGGAR'S OPERA, 1728

$\text{♩} = 200 \text{ } \beta$

Em

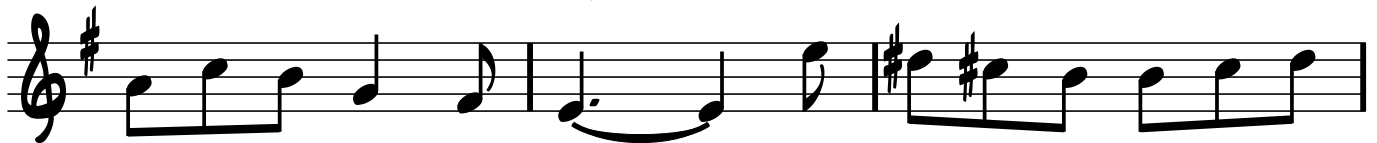


I AM A POOR SHEPHERD UN - DONE, AND

3 B7

Em

B



CAN-NOT BE CUR'D BY ART; FOR A MAIDEN AS BRIGHT AS THE

6 Em

B7

Em



SUN, HAS STO - LEN A - WAY MY HEART. AND

9 G



HOW TO GET IT A - GAIN THERE'S NONE BUT SHE CAN TELL. OR

13

Em

B7

B



CURE. ME OF MY PAIN, BY SAY-ING SHE LOVES ME WELL. AND A -

17 Em

B7

Em

G



LAS! POOR SHEPHERD, A LACK AND WELL - A - DAY. BE -

21

Em

B7

Em



FORE I WAS IN LOVE, O EV - E - RY MONTH WAS MAY.