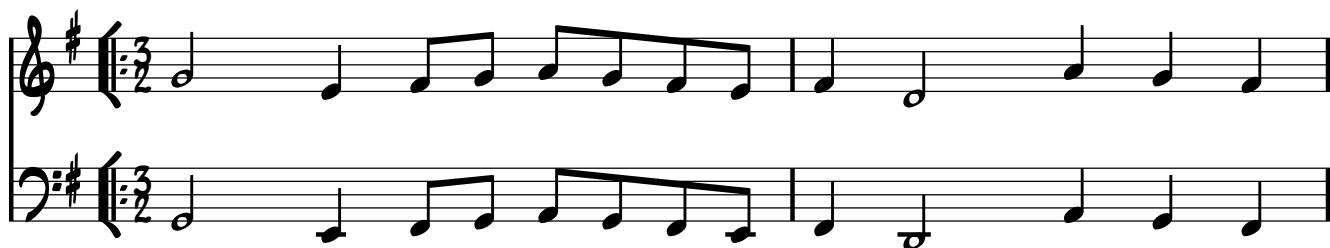


COBBLER'S HORNPIPE

TRAD. (WINDER MANUSCRIPTS)



OLD LANCASTER HORNPIPE

TRAD. (WINDER MANUSCRIPTS)



14

Measures 14 and 15 of a musical score in D major (two sharps). The melody in the treble clef starts on D4, moves to E4, F#4, G4, A4, B4, and then descends to A4, G4, F#4, E4, D4. The bass line starts on D3, moves to E3, F#3, G3, A3, B3, and then descends to A3, G3, F#3, E3, D3. Both staves have a repeat sign at the beginning.

16

Measures 16 and 17 of a musical score in D major. Measure 16 contains a first ending bracket over the last two measures, leading to a repeat sign. Measure 17 contains a second ending bracket over the last two measures, leading to a repeat sign. The melody in the treble clef starts on D4, moves to E4, F#4, G4, A4, B4, and then descends to A4, G4, F#4, E4, D4. The bass line starts on D3, moves to E3, F#3, G3, A3, B3, and then descends to A3, G3, F#3, E3, D3.

19

Measures 19 and 20 of a musical score in D major. The melody in the treble clef starts on D4, moves to E4, F#4, G4, A4, B4, and then descends to A4, G4, F#4, E4, D4. The bass line starts on D3, moves to E3, F#3, G3, A3, B3, and then descends to A3, G3, F#3, E3, D3.

21

Measures 21 and 22 of a musical score in D major. Measure 21 contains a first ending bracket over the last two measures, leading to a repeat sign. Measure 22 contains a second ending bracket over the last two measures, leading to a repeat sign. The melody in the treble clef starts on D4, moves to E4, F#4, G4, A4, B4, and then descends to A4, G4, F#4, E4, D4. The bass line starts on D3, moves to E3, F#3, G3, A3, B3, and then descends to A3, G3, F#3, E3, D3.